



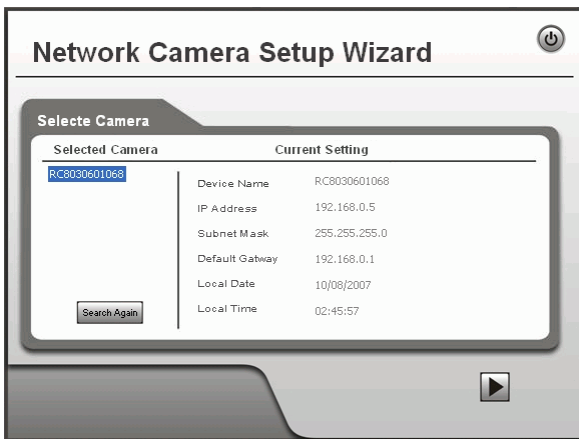
# BLUESCALE VISION CAMERA QUICK START GUIDE

Use this guide to quickly configure the BlueScale<sup>®</sup> Vision<sup>™</sup> camera's fixed IP address and other settings. Read the *BlueScale Vision Camera User's Guide*, included on the documentation CD that came with your library, for detailed information about using the wizard to configure the camera.

## Configuring the Camera IP Address

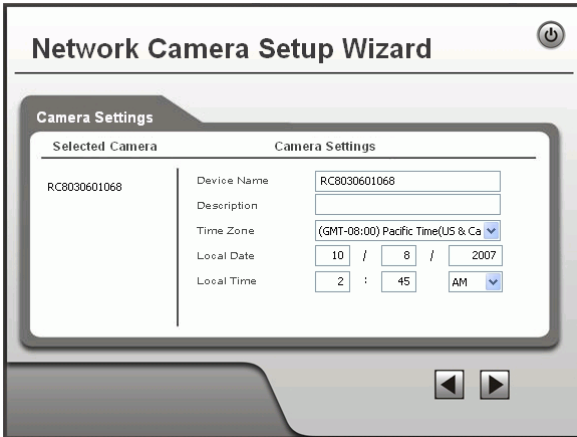
Initial setup should be performed using the supplied Windows-based Setup Wizard, as follows.

1. Insert the Product Documentation CD included with your library into your drive. Run **NetworkCamera.exe**, which is located in the NetworkCamera folder on the CD.
  - You will see the **Welcome** screen.
  - Click the **Setup Camera** button to start the Setup Wizard.
2. The next screen, shown below, will list all of the BlueScale Vision cameras on your LAN.

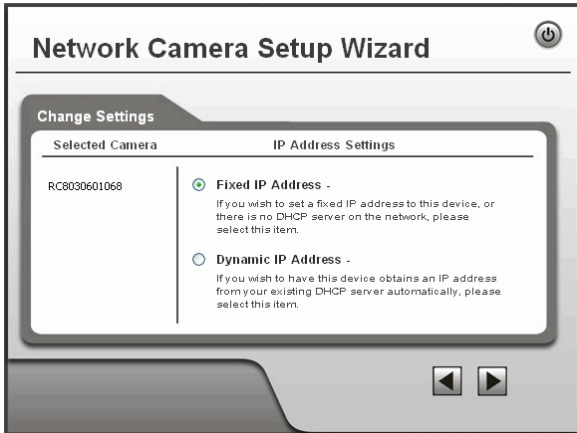


- Select the desired camera from the list on the left. The default name for the BlueScale Vision camera is RC4030nnnnnn. The current settings for the selected camera are displayed in the table on the right.
3. Click **Next** to continue.

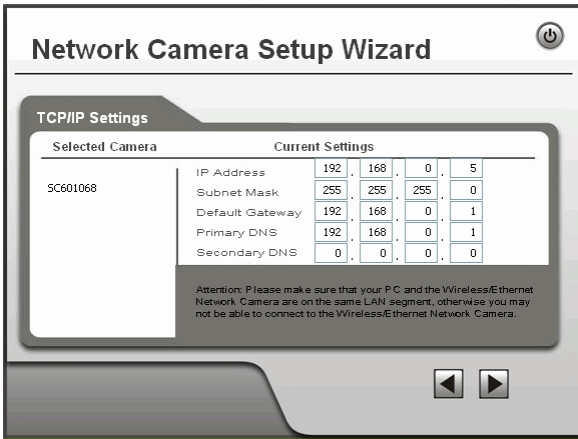
4. If the **Administrator Name** and **Administrator Password** have been set, you will be prompted to enter them.
  - If using the default values, enter **administrator** for the name, and leave the password blank.
  - Otherwise, enter the Administrator Name and Administrator Password set on the **Maintenance** screen.
5. Click **Next** to continue. The **Camera Settings** screen lets you to enter a suitable **Description**, and set the correct **Date**, **Time**, and **Time Zone**.



6. Make any desired changes, and then click **Next** to continue.
7. Choose the **Fixed IP** option on the **IP Address Settings** screen.

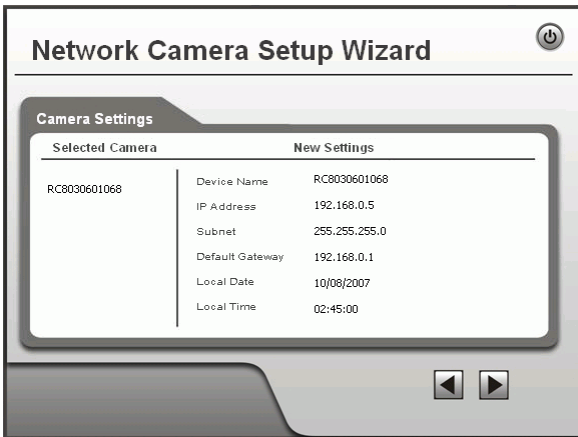


8. Click **Next** to continue. The **TCP/IP Settings** screen displays.



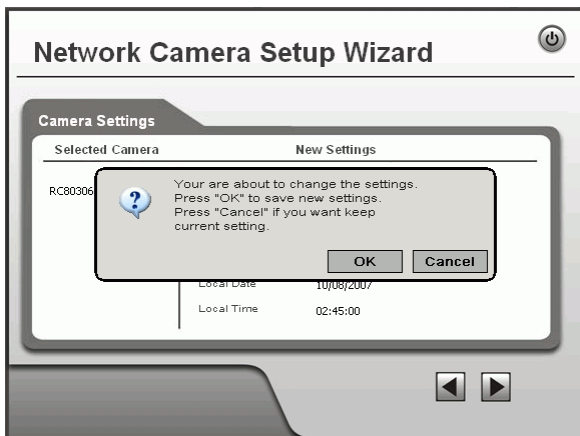
- Enter an unused **IP Address** within the address range used on your LAN.
- The **Subnet Mask** and **Default Gateway** fields must match the values used by PCs on your LAN.
- The **Primary DNS** address is required in order to use the E-Mail alert or Dynamic DNS features. Enter the DNS (Domain Name Server) address recommended by your ISP.
- The **Secondary DNS** is optional. If provided, it will be used if the Primary DNS is unavailable.

9. Click **Next** to continue. The **New Settings** screen displays all of the settings for the camera.



10. Click **Next** if the settings are correct, or click **Back** to modify any incorrect values.

11. Click **OK** to confirm that you want to save the new settings. If you want to cancel your changes, click **Cancel**.



12. After clicking **OK**, the **Successful** screen displays. Clicking the **Install Utility** button will install the Viewing/Recording utility.
13. Click **Exit** to end the Wizard. Setup is now complete.

## Configuring Library BlueScale Vision

1. Using a remote connection, use a web browser to log into the BlueScale user interface on your library.
2. From the menu toolbar, select **Configuration** → **System** to display the System Setup screen.
3. Scroll down to see the Other Setting pane in the System Setup screen.
4. Enter the IP address for the camera in the **BlueScale Vision IP Address** field.
5. Use a shielded Ethernet cable to connect the BlueScale Vision connector on the back of the library to the network.

## Viewing Live Video

1. Click the camera icon in the Status bar to launch the web-based BlueScale Vision viewer.



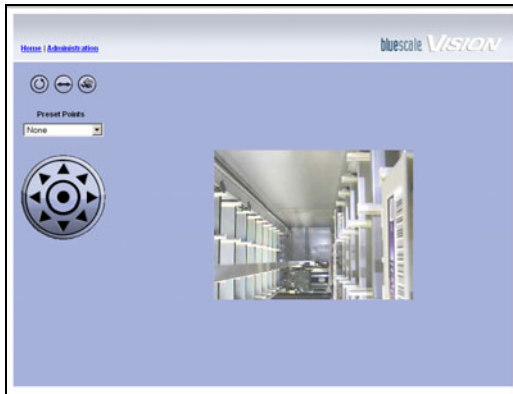
Camera icon

The start page for the BlueScale Vision viewer opens in a new web page.







Main Screen

2. Select View Video to see the camera's view of the library interior.



Camera view of library interior

3. Use the onscreen buttons and controls to control the motion of the camera.

	Click to move the camera lens through the preset positions in a sequence defined by the Camera Administrator.
	Click to cause the camera lens to pan from left to right automatically.
	Click to cause the camera lens to move to the Motion Detection Preset position.
	Click to point the camera lens to the desired position. There may be a short delay after clicking the desired icon. Wait a couple of seconds instead of clicking again.

Read to the *BlueScale Vision Camera User's Guide* for more details of the Playback and Record functions.