



Spectra Rack

Bolt-Down Bracket Installation

Copyright

Copyright © 2015 Spectra Logic Corporation. All rights reserved. This item and the information contained herein are the property of Spectra Logic Corporation.

Notices

Except as expressly stated herein, Spectra Logic Corporation makes its products and associated documentation on an “AS IS” BASIS, WITHOUT WARRANTY OF ANY KIND, EITHER EXPRESSED OR IMPLIED, INCLUDING BUT NOT LIMITED TO THE IMPLIED WARRANTIES OF MERCHANTABILITY OR FITNESS FOR A PARTICULAR PURPOSE, BOTH OF WHICH ARE EXPRESSLY DISCLAIMED. In no event shall Spectra Logic be liable for any loss of profits, loss of business, loss of use or data, interruption of business, or for indirect, special, incidental or consequential damages of any kind, even if Spectra Logic has been advised of the possibility of such damages arising from any defect or error.

Information furnished in this manual is believed to be accurate and reliable. However, no responsibility is assumed by Spectra Logic for its use. Due to continuing research and development, Spectra Logic may revise this publication from time to time without notice, and reserves the right to change any product specification at any time without notice.

Trademarks

BlackPearl, BlueScale, CC, Spectra, SpectraGuard, Spectra Logic, TeraPack, TFinity, TranScale, and Verde are registered trademarks of Spectra Logic Corporation. ArchiveGrade, ArcticBlue, and Verde DPE are trademarks of Spectra Logic Corporation. All rights reserved worldwide. All other trademarks and registered trademarks are the property of their respective owners.

Part Number

91010033 Revision A

Revision History

Revision	Date	Description
A	December 2015	Initial release

Contacting Spectra Logic

To Obtain General Information

Spectra Logic Website: www.spectralogic.com

United States Headquarters

Spectra Logic Corporation
Phone: 1.800.833.1132 or 1.303.449.6400
International: 1.303.449.6400
Fax: 1.303.939.8844

European Office

Spectra Logic Europe Ltd.
Phone: 44 (0) 870.112.2150
Fax: 44 (0) 870.112.2175

Spectra Logic Technical Support

Technical Support Portal: support.spectralogic.com

United States and Canada

Phone:
Toll free US and Canada: 1.800.227.4637
International: 1.303.449.0160

Europe, Middle East, Africa

Phone: 44 (0) 870.112.2185

Deutsch Sprechende Kunden

Phone: 49 (0) 6028.9796.507

Email: spectralogic@stortrec.de

Mexico, Central and South America, Asia, Australia, and New Zealand

Phone: 1.303.449.0160

To Obtain Documentation

Spectra Logic Website: support.spectralogic.com/documentation

BOLT-DOWN BRACKET INSTALLATION



This document describes installing bolt-down brackets on a Spectra Logic® rack. **The bolt-down brackets are needed to prevent the rack from tipping over, which could create a safety hazard and cause personal injury.**

Estimated Time = 30 minutes.

Note: The bolt-down brackets described in this document are designed to fit the 19-inch (48.3 cm) rack sold by Spectra Logic. If you purchased your rack elsewhere, contact your supplier for a bolt-down bracket kit and instructions.

BEFORE YOU BEGIN

It is best to bolt down the rack before installing equipment in it. If equipment is already installed, it should be removed to allow access to the bottom of the rack without making the rack top heavy.



WARNING

Remove equipment first from the top of the rack, and then downward, to prevent the rack from becoming top heavy, which could cause it to tip over and cause personal injury.

WARNUNG Entfernen Sie Geräte zunächst aus dem oberen Bereich des Racks, und dann nach unten, um das Rack nicht kopflastig, die dazu führen können, es zu kippen und Verletzungen verursachen zu vermeiden.



WARNING

If a Verde DPE™ or ArcticBlue™ expansion node will be installed in the rack, the rack **must be bolted down** to prevent it from tipping over due to the weight of the heavy equipment in the rack, especially when the rails are extended.

WARNUNG Wenn ein Verde DPE oder ArcticBlue Erweiterungsknoten wird im Rack installiert werden kann, **muss das Gestell festgeschraubt werden**, um es vor dem Umkippen zu verhindern durch das Gewicht der schweren Geräte im Rack, vor allem, wenn die Schienen erweitert.

Gather Materials and Tools

Required

- A T30 Torx driver
- A 13mm wrench
- Pliers (optional)
- A rack bolt-down kit from Spectra Logic (*PN 10668*)

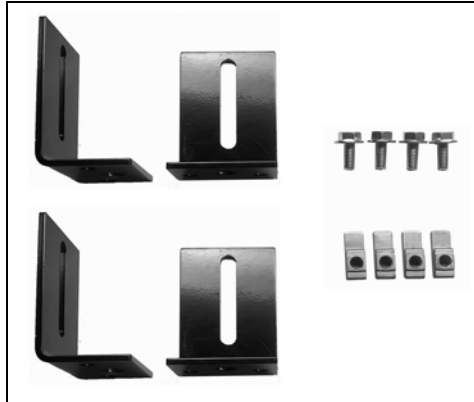


Figure 1 The rack bolt-down kit

Note: Floor anchors are not provided. Select suitable anchors for your flooring and gather the tools required to install the anchors.



WARNING

Suitable floor anchors must be properly installed to prevent the rack from tipping over.

WARNUNG Geeignete Bodenanker muss richtig installiert werden, um das Rack umkippt.

INSTALL BOLT-DOWN BRACKETS

Use the following instructions to install the rack bolt-down brackets. To allow racks to be placed next to each other, and to prevent a tripping hazard, the bolt-down brackets are installed inside the rack perimeter.

1. For best access, using a T30 Torx driver, remove the eight screws securing the side panel to the rack and remove the panel. Repeat for the other side.

Note: You can install the bolt-down brackets from the front and back of the rack, but it is easier to install side brackets from the side.

2. Choose the locations for the bolt-down brackets. The brackets should be spaced as far apart as possible on the base rails.

**WARNING**

Make sure that the selected locations provide adequate floor structural integrity for the anchors.

WARNUNG Stellen Sie sicher, dass die ausgewählten Stellen ausreichende Bodenstrukturelle Integrität für die Anker.

Figure 2 and Figure 3 show two possible configurations for locating brackets.



Figure 2 Example 1.

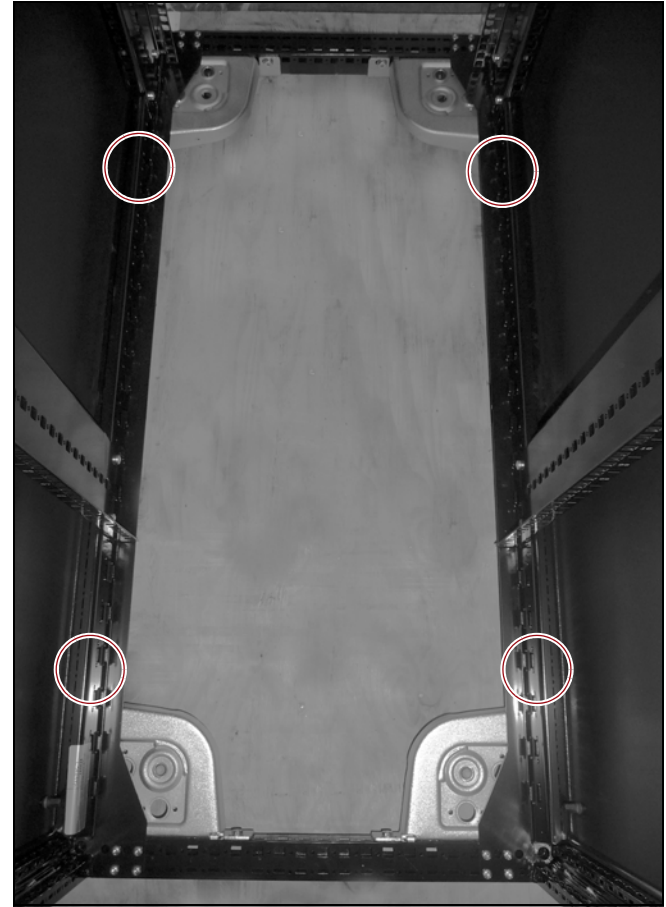


Figure 3 Example 2.

3. Holding the tab on the nut, orient it so that the protruding rectangle faces toward the inside of the rack and insert it through the selected rectangular hole in the top of the base side rails. Hold the nut so that the protruding rectangle fits through the rectangular hole in the side of the rail.

Note: It may be helpful to hold the tab with pliers when placing the nut in the rail.

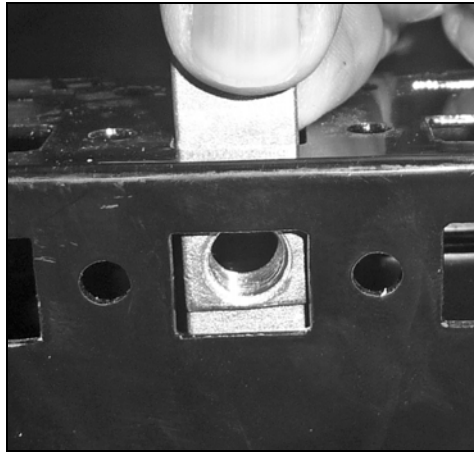


Figure 4 Place the nut in the rail facing the inside of the rack.

4. Set the bracket so that the nut can be seen through the slot in the bracket. The bottom of the bracket can face toward the inside of the rack or toward the outside of the rack.
5. Using a 13mm wrench install the bolt to secure the bracket to the rack.

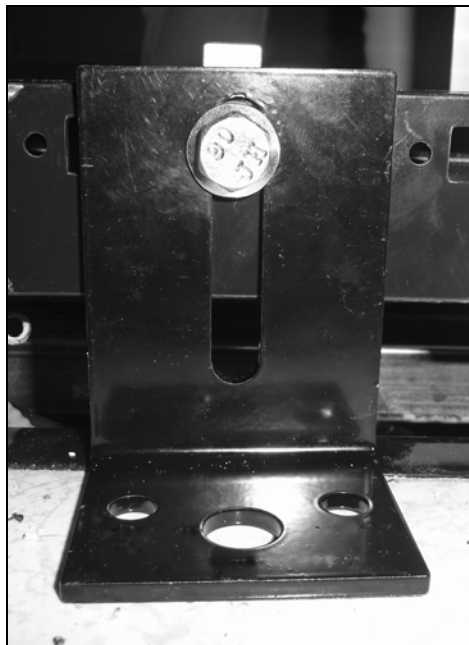


Figure 5 The installed bracket.

6. Repeat [Step 3](#) through [Step 5](#) for the remaining brackets.

7. Install the floor anchors. The type of anchor and process for installing them varies depending on the type of flooring.

**WARNING**

Suitable floor anchors must be properly installed to prevent the rack from tipping over.

WARNUNG Geeignete Bodenanker muss richtig installiert werden, um das Rack umkippt.

Note: You may need to mark the anchor locations and then move the rack or remove the brackets to make room for drilling or otherwise preparing the floor for the anchors.

8. Verify that all bolts and anchors are tight.
9. You are now ready to install equipment in the rack and replace rack side panels if they were removed.